

VIBXPert® II Balancer

Field balancing – simple – fast – accurate



- Easy operation
- 1- or 2-plane field balancing
- Integrated machine diagnosis
- Upgradeable to VIBXPert® II

VIBXPERT® II Balancer

Field balancing the intelligent way

VIBXPERT® II Balancer is a high performance measurement device for field balancing of rotating machinery. Additionally, it provides vibration measurement and analysis capabilities to support the diagnosis of imbalance and other machinery problems. This Balancer was designed to provide the exact combination of features you need in an easy to use device and provide a growth path to maximize your investment.

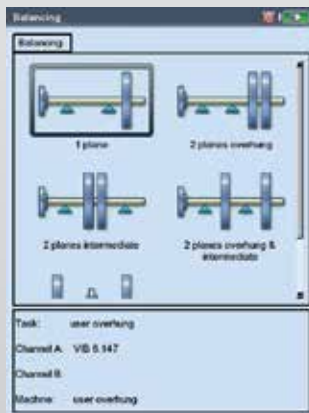
The VIBXPERT® II Balancer is based upon the award winning VIBXPERT® Condition Monitoring platform and can be easily upgraded to provide the same proven and sophisticated capabilities enabling the identification of equipment problems that prevent the routine operation of plant equipment. A few of the benefits are improved equipment reliability, reduction in unwanted downtime, reduced operation costs, increased production and profits and a safer and better working environment.



A 'smiley' appears when the required balancing grade is reached

- ▶ Overall values and process parameters
- ▶ Time waveform
- ▶ Amplitude spectrum
- ▶ Envelope acceleration spectrum
- ▶ Phase including recording
- ▶ Bump test, 1-channel
- ▶ Coast-down/run-up test
- ▶ ISO standards for evaluation

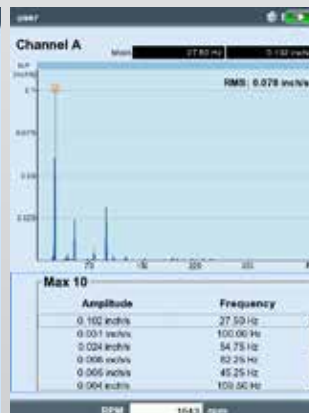
Balancing reports can be stored on an USB flash drive and printed out



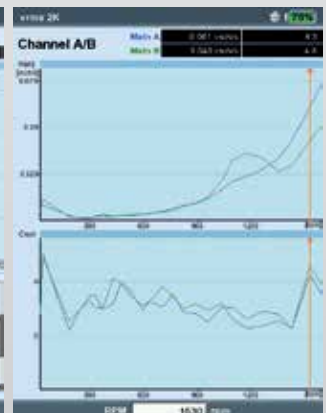
A fitting program for every balancing task



Every step of the balancing procedure is explained



Vibration analysis helps you identify and eliminate machine faults



One- or two-channel coast-down test with RMS, amplitude or waterfall



LUDECA Inc.
1425 N.W. 88th Avenue
Doral, FL 33172
Phone: (305) 591-8935
Fax: (305) 591-1537
info@ludeca.com
www.ludeca.com



PRÜFTECHNIK
Condition Monitoring GmbH
Oskar-Messter-Str. 19-21
85737 Ismaning, Germany
Tel.: +49 89 99616-0
Fax: +49 89 99616-300
info@pruftechnik.com
www.pruftechnik.com