

VIBXPERT® II

FFT Data Collector & Signal Analyzer



• Fast data acquisition

• Powerful diagnostic tools

• Easy to use

The *time is now*

A brilliant display yet long periods of use – VIBXPERT® II makes it possible!

VIBXPERT® II combines the advantages of a rapid processor and a brilliant energy-efficient color display. It demonstrates that the use of powerful components is possible with low power consumption.

VIBXPERT® II is ...

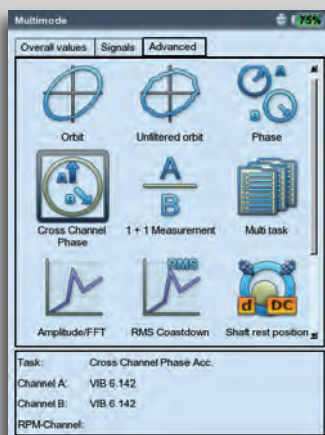
- ▶ **Intuitive** to operate with its graphical user interface and effective use of color.
- ▶ **Fast** thanks to optimized measuring workflows and advanced processor technology.
- ▶ **Ergonomic** with a handy design and brilliant color display.
- ▶ **Powerful** due to many practical analysis functions and measuring templates.
- ▶ **Long-lived** with a long battery life and a large data memory.

Interfaces for industrial environments

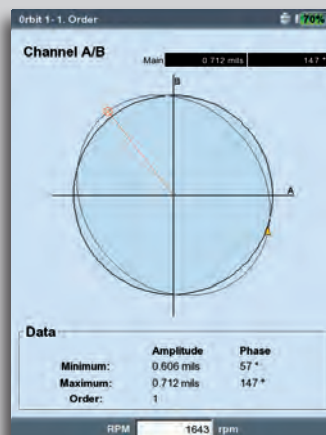
Five dust-protected interfaces that are color coded provide easy identification and connection to a wide variety of sensors and data links.



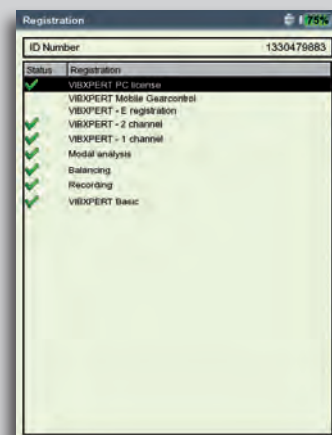
Simple to use with a wide range of applications



Meaningful icons offer guidance in selecting the measurement task.

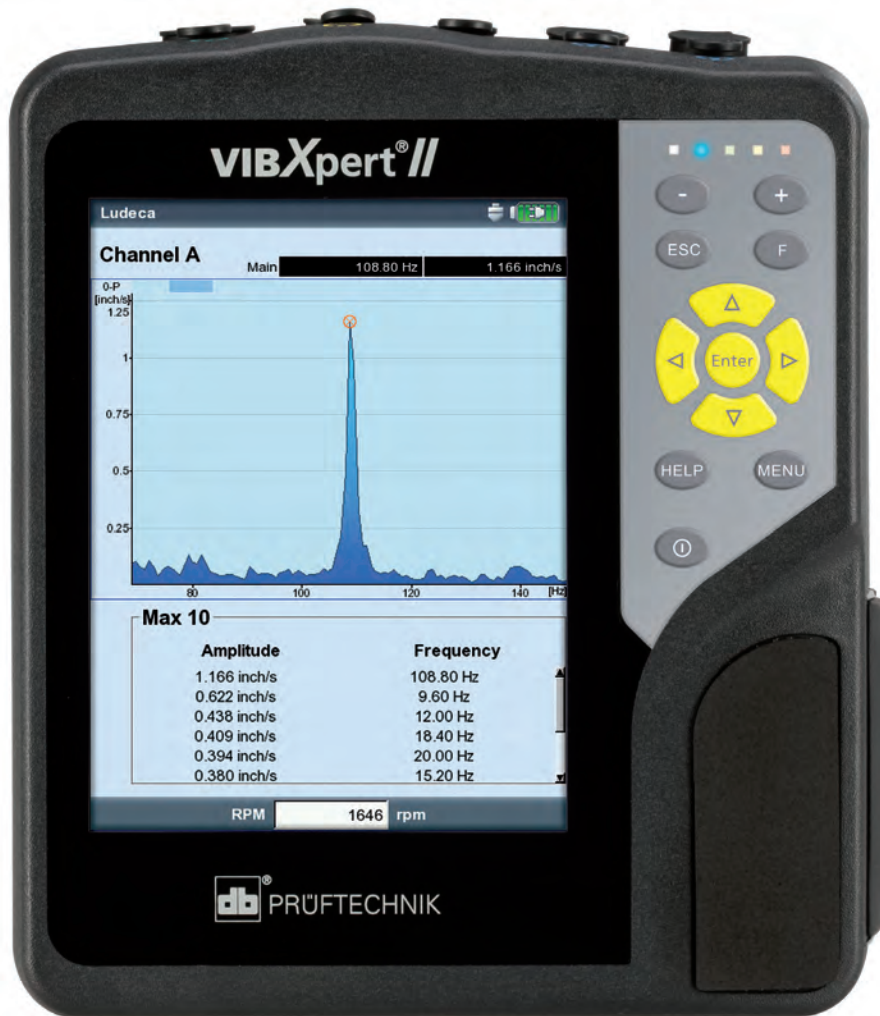


Shaft vibration analysis with orbit, static shaft position and runout.



VIBXPERT® II can be easily upgraded to include many expert diagnostic options such as Modal/ODS, TWF Recorder, etc.

Ergonomic and user-friendly



Display showing a spectrum with a max 10 list. Data can be displayed with many different configurations to assist the user in the interpretation of equipment faults.

Status LEDs

- ▶ Traffic light display for the evaluation of results according to the ISO standard or user-defined alarm thresholds
- ▶ Device and battery status

Ergonomic keyboard

- ▶ One-thumb operation
- ▶ Illumination automatically adjusts to ambient light
- ▶ Non-slip grip

Brilliant color display

- ▶ 18-bit TFT LCD
- ▶ VGA (480 x 640 pixels)
- ▶ Non-reflective
- ▶ Automatic switch-off

Sturdy housing

- ▶ Light and compact
- ▶ Protection class IP 65

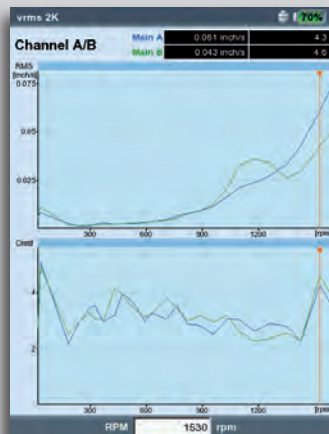
Large data memory

- ▶ 2 GB CompactFlash card, upgradeable

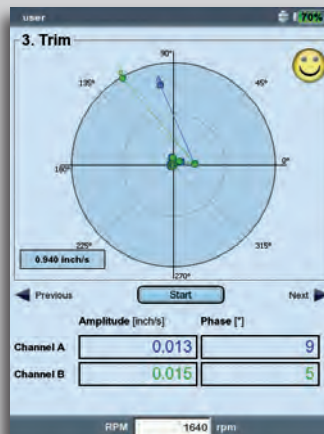
Powerful Li-ion battery

- ▶ 8-hour operating life
- ▶ Exchangeable

Simple to use with a wide range of applications



One- or two-channel coast-down test with RMS, amplitude or waterfall.



Field balancing in two planes. A 'smiley' appears when the required balancing grade is reached.



Route-based data collection with a clear display of measuring locations.

VIBXPERT® II in brief

Versatile

User upgradeable
Route-based data collection
Vibration diagnosis
One- or two-plane field balancing
Acceptance measurement with machine templates
Troubleshooting
Multimeter
Data logging
Visual inspection

Analysis in detail

Characteristic overall values & process parameters
Time waveform
Amplitude/envelope spectrum
Cepstrum
Phase, cross-channel phase
Orbit
Static shaft position

Runout analysis (shaft vibration)
Bump test
Coast-down/run-up test
Order analysis
Modal analysis
Operating Deflection Shape Analysis (ODS)
Transient capture
Long-term recording
Characteristic frequency markers
Signal post-processing
ISO standards for evaluation

Valuable additional features

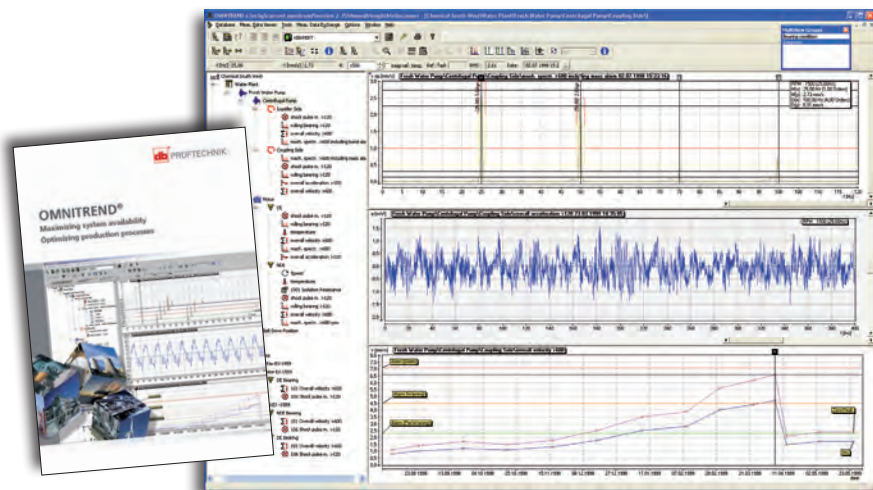
Printing of measurement reports
Rugged hard case
Extensive accessories
Optional measuring functions that can be enabled by entering a password



OMNITREND® multiuser PC Software

OMNITREND® can be used to manage machine data, archive results in a database and enable the programming of measurement tasks and routes.

A wide range of evaluation and documentation functions are available. These are described more closely in the OMNITREND® brochure.



OMNITREND® supports the evaluation of collected machine data on a PC.

© Copyright 2010 by PRÜFTECHNIK AG. ISO 9001:2008 certified. VIBXPERT® and OMNITREND® are registered trademarks of PRÜFTECHNIK Dieter Busch AG. No copying or reproduction of this information, in any form whatsoever, may be undertaken without express written permission of PRÜFTECHNIK AG. The information contained in this leaflet is subject to change without further notice due to the PRÜFTECHNIK policy of continuous product development. PRÜFTECHNIK products are the subject of patents granted or pending throughout the world. LIT 53.400.LUD



LUDECA Inc.
1425 N.W. 88th Avenue
Doral, FL 33172
Phone: (305)591-8935
Fax: (305)591-1537
eMail: info@ludeca.com
www.ludeca.com

PRÜFTECHNIK
Condition Monitoring GmbH
Oskar-Messter-Str. 19-21
85737 Ismaning, Germany
Tel: +49 89 99616-0
Fax: +49 89 99616-300
eMail: info@pruftechnik.com
www.pruftechnik.com

A member of the PRÜFTECHNIK group